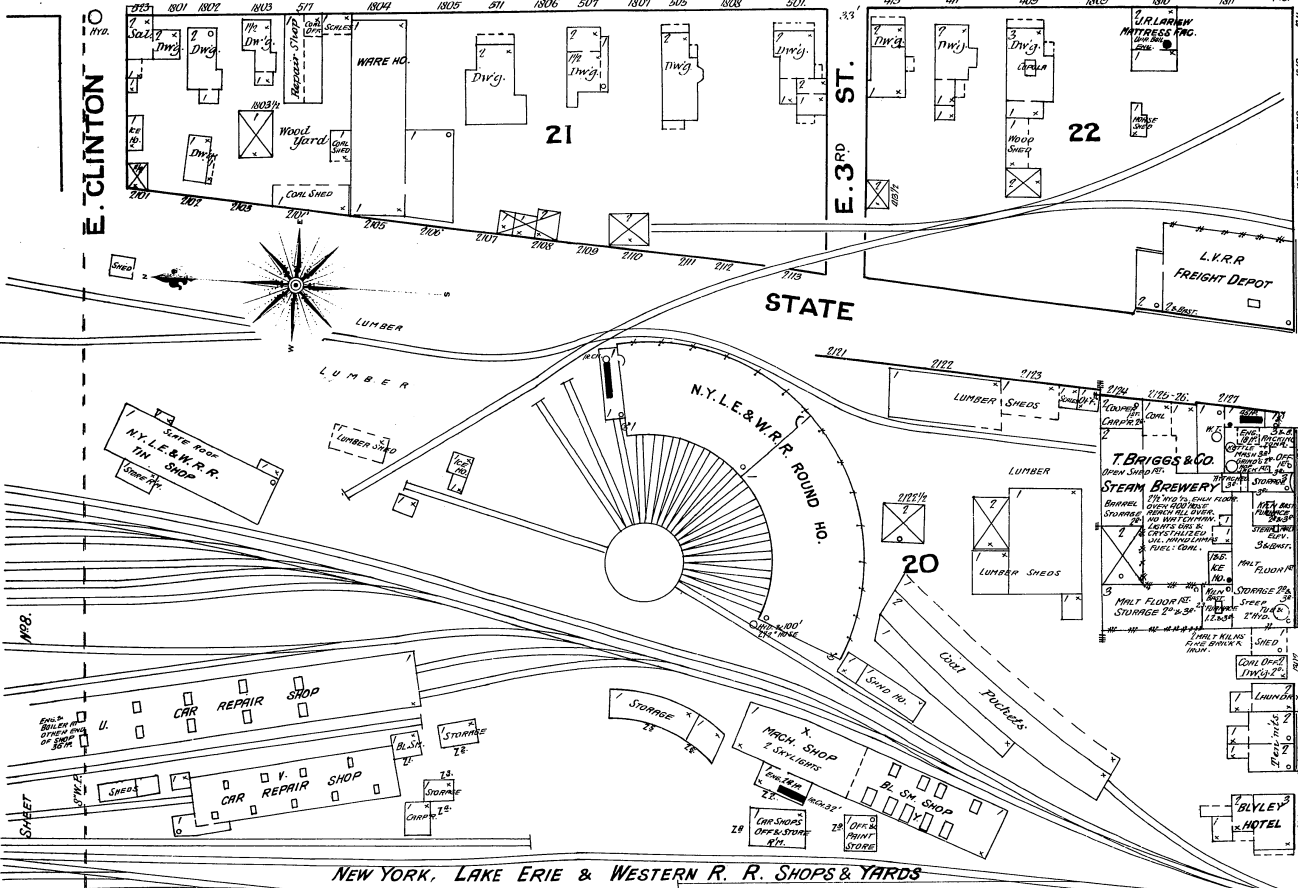


BALDWIN

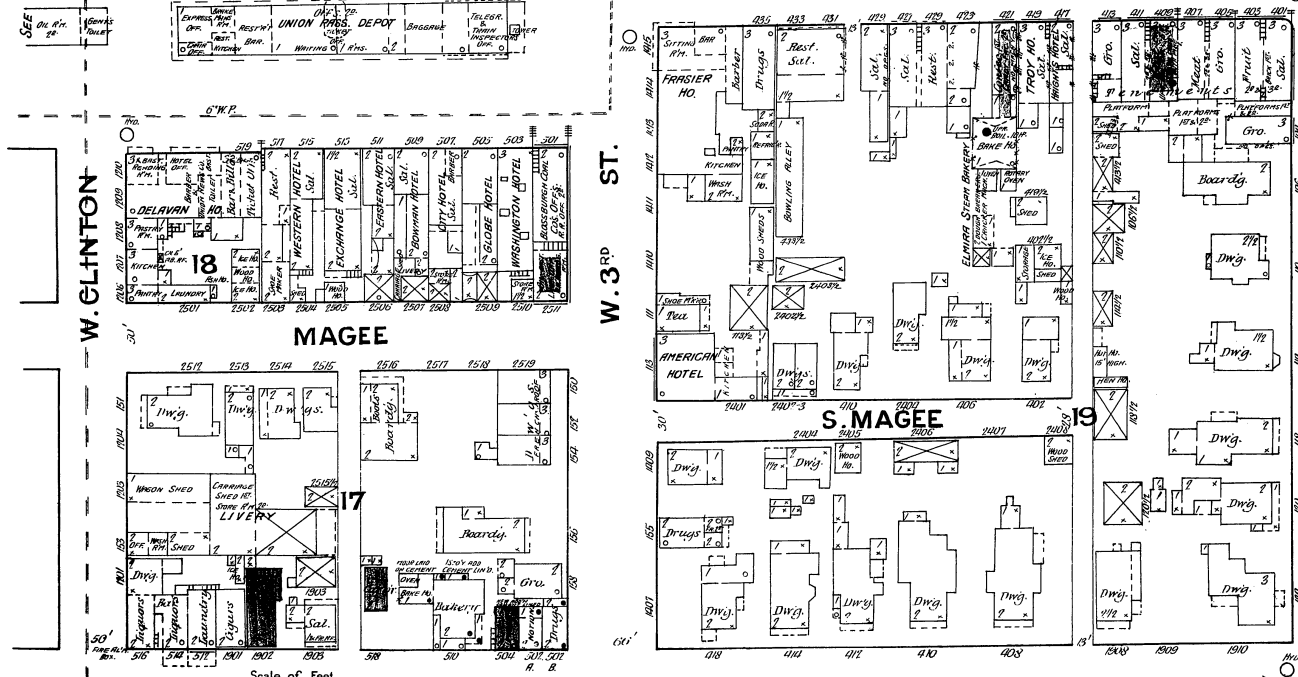
5" W.P.

JUNE 1887
ELMIRA
N.Y.



NEW YORK, LAKE ERIE & WESTERN R. R. SHOPS & YARDS

RAIL ROAD AV.



Scale of Feet.

MAIN

6" W.P.

Map Division
Library of Congress

U.S. GEOLOGICAL SURVEY