

SEE

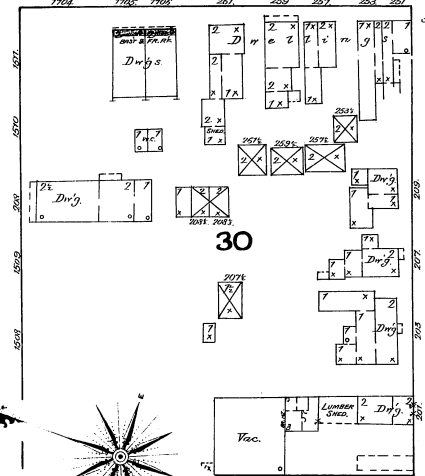
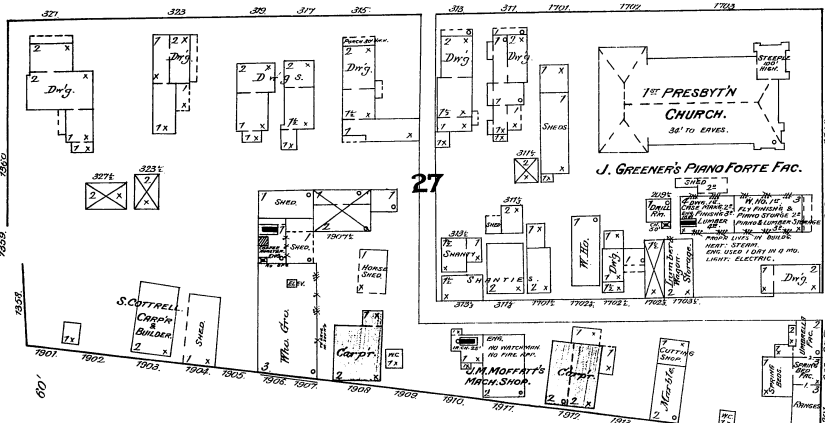
SHEET

No. 5.

JUNE 1887
ELMIRA
N. Y.

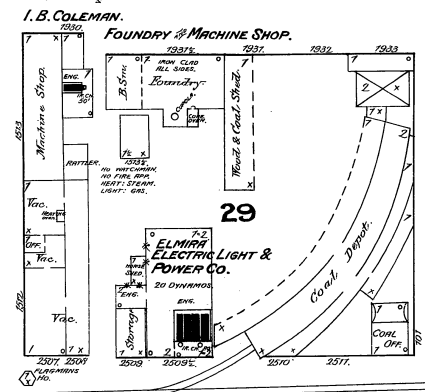
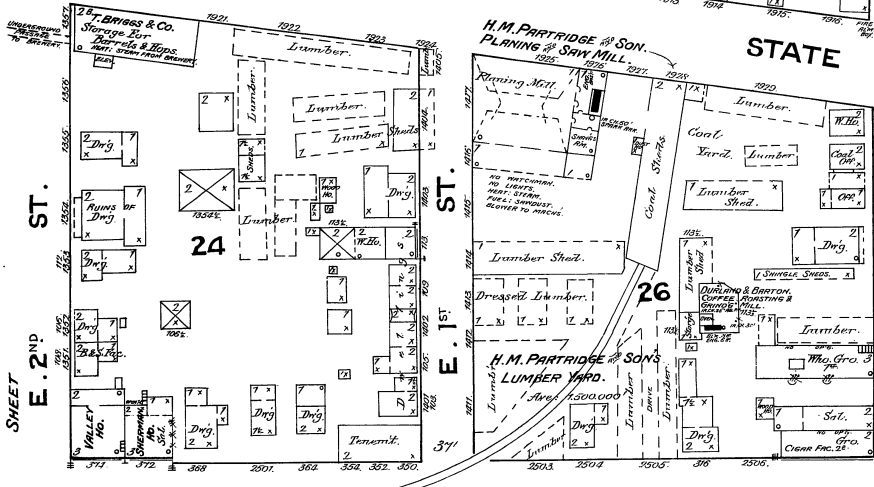
6

BALDWIN



No. 7.

No. 3.



ST.

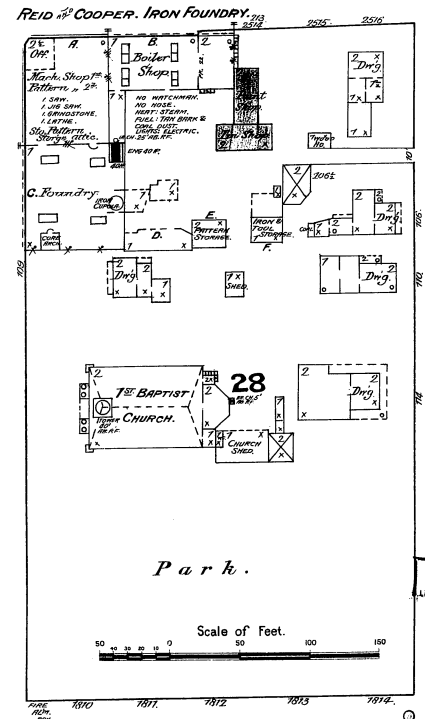
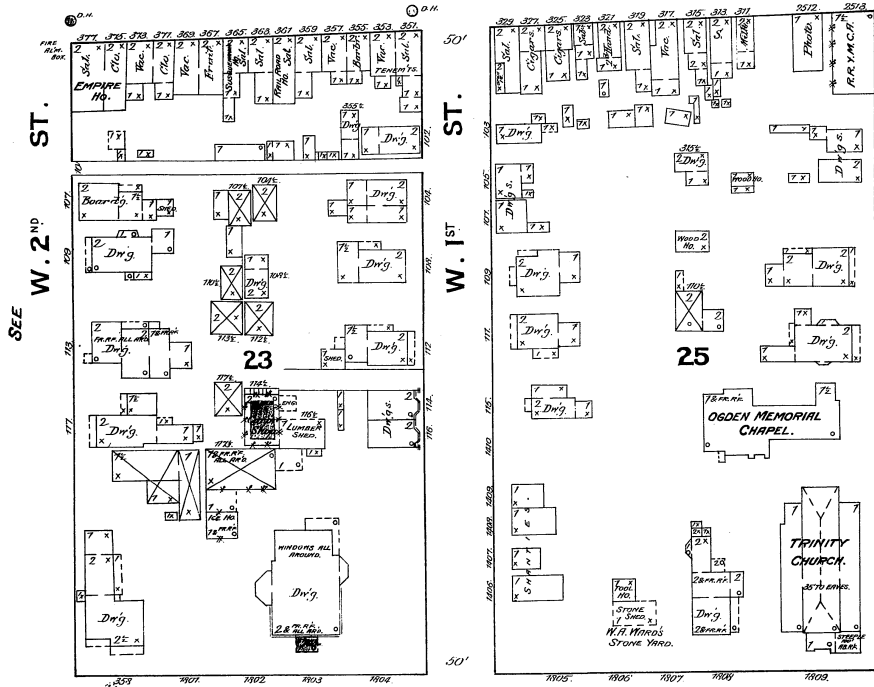
STATE

E. CHURCH

E. GRAY

E. 2ND ST.

RAIL ROAD AV. N.Y. LANE ERIC & WESTERN R. R.



W. 2ND ST.

W. 1ST ST.

W. CHURCH

W. GRAY

SEE

SEE

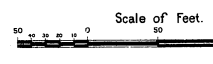
Park.

MAIN

SEE

SHEET

No. 2.



Map Division
Library of Congress