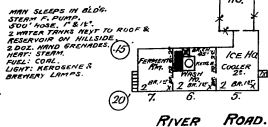
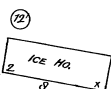


Rock Spring Brewery.
CHAS. GERBER, JR.

3 Miles S.E. of P.O.



RIVER ROAD.



Chemung River

OLD R.R. BUILDING NO. NOT USED.

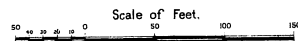
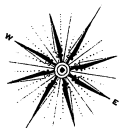
Elmridge

Lake

Lake.

LAWRENCE A. TURNER Act.
SAW & PLANING MILLS.

NIGHT & SUNDAY WATCHMAN AT EACH MILL.
NO MATCH CLUCK.
CITY WATER & WIND IN EACH MILL.
200' 1/2" HOSE AT SAW MILL.
CUM. OF SAW MILL 10000' PER DAY.
BELONGER TO MILL MACHINES IN PLANING MILL.
WATER'S STEAM. FUEL: WASTE.
LIGHTS: KEROSE.



Pond.

NO EXPOSURE.