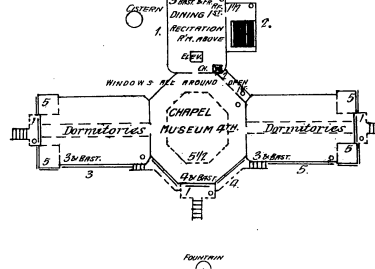


JUNE 1887
ELMIRA
N.Y.

WASHINGTON AVE.

ELMIRA FEMALE COLLEGE

NOTE: STERN, FUEL CON., LIFES. SIG. NO. FIRE APPARATUS.



Chemung River

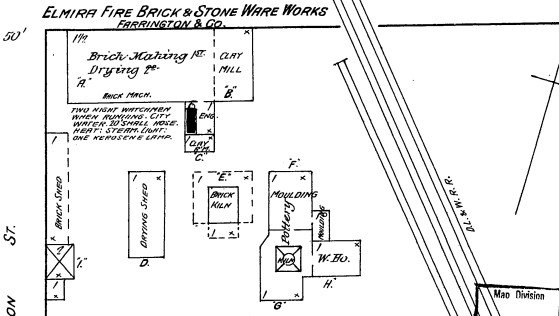
F. SHEELY TANNERY

1/2 Mile S.W. of E.O.

W HUDSON ST.

ELMIRA FIRE BRICK & STONE WARE WORKS
FARRINGTON & CO.

E. CHURCH ST.

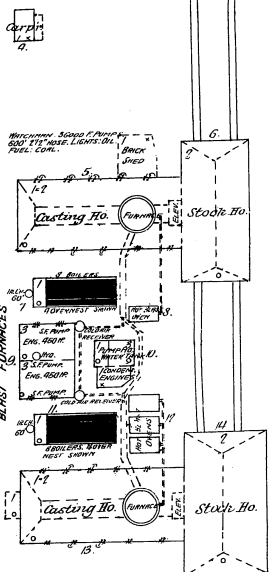


No exposure

No exposures



ELMIRA IRON & STEEL ROLLING MILL CO.

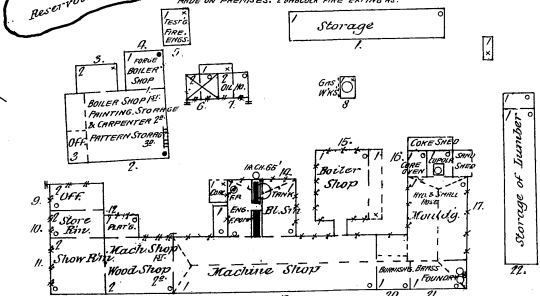


Fields No exposures any side

On South Side of Chemung River 1/2 Mile S. of R.R. Bridge

LA FRANCE FIRE ENG. CO.

NOTE: WATCHMAN & CLACKS, FEMALE COLLEGE
CHURCHES WITH RESERVATION (ONE HOUR) (MINUTE)
500 TO 700 OF VULCANITE PULV. CON. (100 TO 1500) (1000)
SIZES IN RESERVATION & LATER FOR SHOP. LIGHTS. ONE
MADE BY PREMISES. 2 BRACK FIRE ENTINGERS.



ERIE ST.

Scale of Feet.

